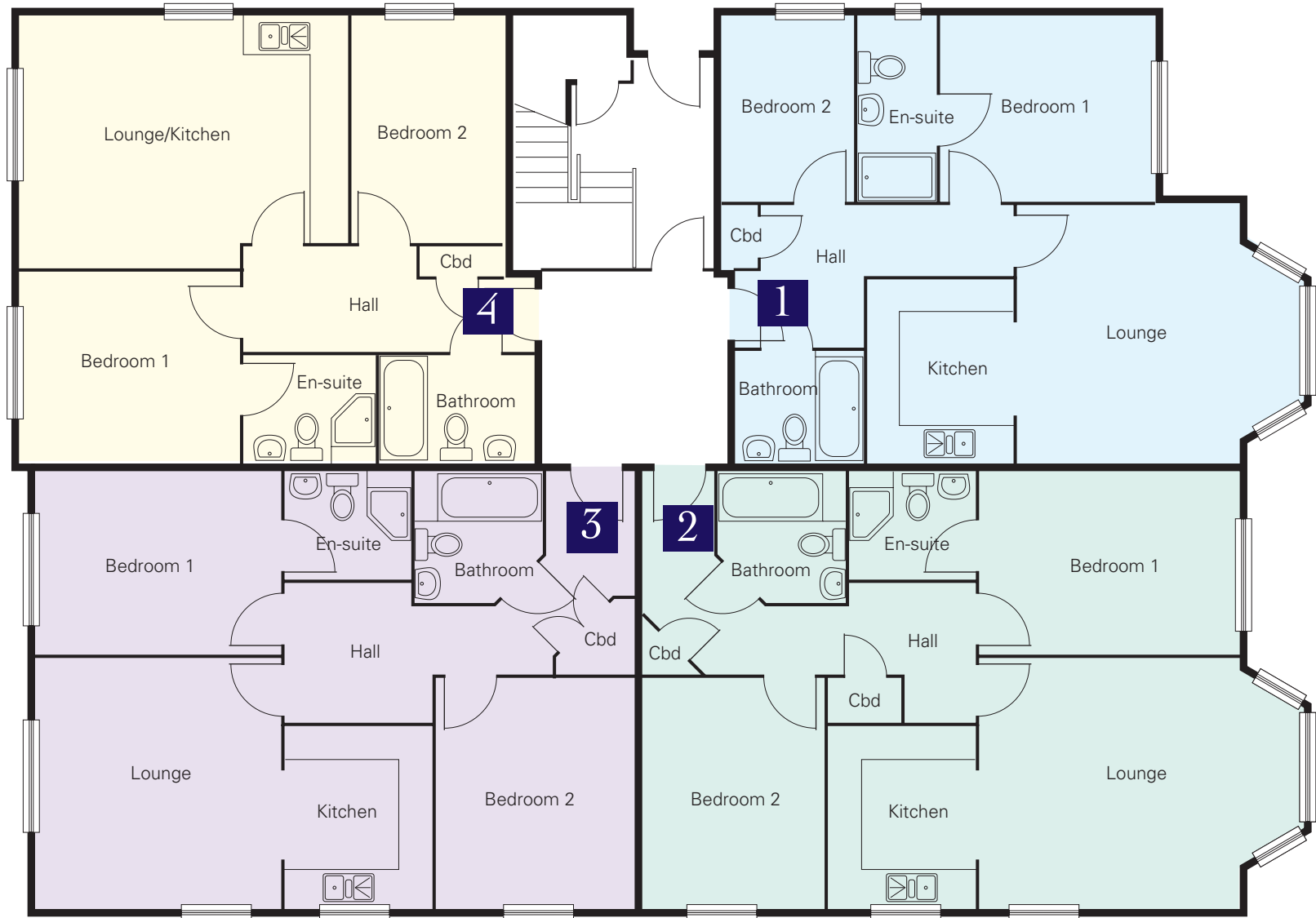


Kempton Court



Ground Floor

IMPORTANT: The details contained on this website are intended to give a general indication of the proposed development and floor layouts. The Company reserves the right to alter any part of the development, specification or floor layouts at any time. The contents herein shall not form part of any contract or be a representation inducing any such contract. These properties are offered subject to availability.

The floor plans are not to scale and measurements of doors, windows and rooms are approximate and no responsibility is taken for any error, omission or mis-statement. In most cases, the approximate dimensions quoted indicate maximum room sizes and are scaled from plans before construction has commenced. Potential purchasers should note that no allowance has been made for the thickness of plaster or skirting boards and dimensions may vary during construction. They are not intended to be used for carpet sizes, appliance spaces or items of furniture. Apartments of the same type may vary in size and purchasers are strongly advised to confirm all measurements of their chosen home on site. Variation in the construction and landscaping should be expected. Illustrations are artist's impressions.